



2023 /



XYcolo Product Presentation

XYcolo

XYcolo only produces silicone dolls, luxury adult toy



01	3 Silicone Colors
02	5 Types Of Silicone Materials
03	11 Types Of Doll Heights
04	38 Heads Options
05	Skeleton Presentation
06	Customized Service
07	Accessories
08	Storage and Maintenance

Contents



III

—
XYcolo

XYcolo Company Presentation

—XYcolo only produces silicone dolls,luxuary adult toy

2
0
2
3
/



XYcolo

XYcolo, founded in 2018, is a high-end silicone doll maker staffed by top makeup artists and product engineers. We offer the best value dolls, featuring a variety of head and body style combinations. XYcolo silicone sex dolls became an instant hit as it was launched.





III

—
X Y c o l o

2
0
2
3
/

01. 3 Silicone Colors

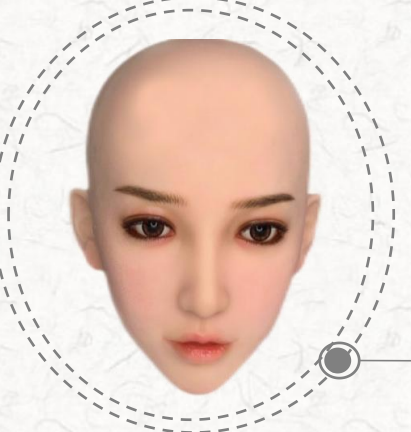
—Tan Color/Normal Asian / Pale Pink



Tan Color



Normal Asian



Pale Pink

C
O
N
T
R
A
S
T



Normal Asian



Pale Pink



III

X Y c o l o

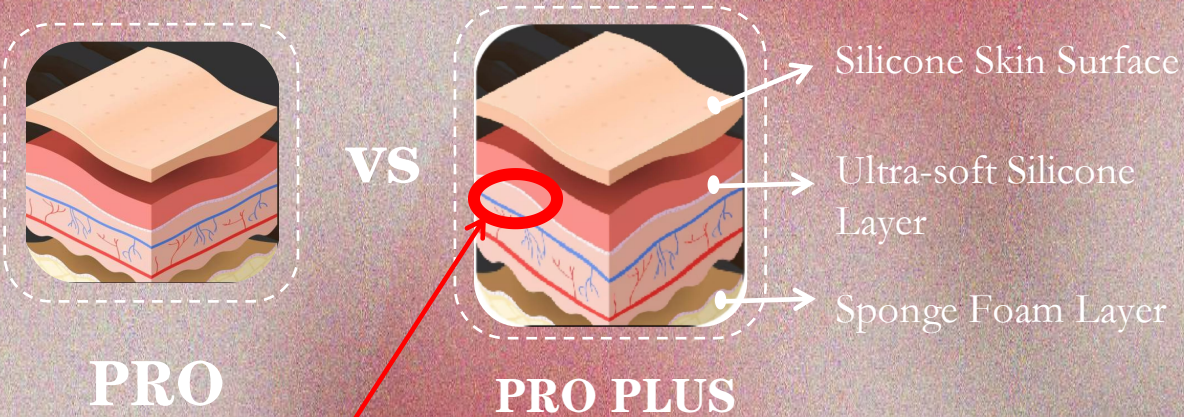
2
0
2
3
/

02. 5 Types Of Silicone Materials

—PS-Platinum Silicone /PSP-Platinum Silicone Pro /OS-Organic Silicone /OSP-Organic Silicone Pro/
OS PRO PLUS/ PS PRO PLUS



The Skin Layers of the XYCOLO ORGANIC SILICONE PRO (OSP)



01

PS-Platinum Silicone

Platinum Silicone (PS) is the entry-level choice and the most affordable range of the XYcolo collections. PS dolls default to non-articulated steel welded skeleton and can be upgraded to the aluminum articulated skeleton at a cost of \$300.

02

PSP-Platinum Silicone Pro

PSP is designed in layers, the outer surface is platinum silicone, with a layer of fat under the skin, which simulates the touch of human muscles, soft and real. PS pro dolls are also default to non-articulated steel welded skeleton, can be upgraded to the aluminum skeleton at a cost of \$300.

03

OS-Organic Silicone

Organic Silicone (OS) is the lightest and has good body finishing. If you're a photography buff, OS dolls are handy for you to move around and take pictures of them. It is the least soft type, but you can add some extra softness options such as soft thigh or belly to increase its softness. .

04

OSP-Organic Silicone Pro

Organic Silicone PRO (OSP) has 10 skin layers that reproduce realistic human skin features, such as pores, veins, and skin texture. It is not only the most luxurious collection of all XYcolo dolls, but also the best silicone dolls in China.

05

PRO-PLUS

Some customers have a higher demand for softness, so based on the structure of PRO, we have increased the thickness of the "Ultra-Super Soft Layer" so that customers can feel a softer and more elastic skin. It is the upgraded version of PRO. However, for first time XYcolo buyers, the PRO version is already superior to many other products on the market, so there is no need to buy this special customised PLUS.



XYcolo Comparison Of Different Versions Silicone Doll

Manufacturer Sales: Monica Email: xycolo2@126.com

NO	Description	Organic Silicone Pro(OSPRO)/ OSPRO PLUS	Organic Silicone (OS)	Platinum Silicone Pro (PSPRO)	Platinum Silicone (PS)
1	Body skin Pigmenting	10 Layers (As Real As Human Body)	6 Layers	3 Layers	3Layers
2	Pigmentig Sustainability	No Fade or Crease	No Fade or Crease	Fade When Rub Hard Fine For Normal Use	Fade When Rub Hard Fine For Normal Use
3	Simulated Muscle Layer, Flesh Hand Feeling	YES	NO	YES	NO
4	Skeleton	Aluminum Articulated Skeleton By Default	Aluminum Articulated Skeleton By Default	Steel Welded Skeleton By Default (Can Be Upgraded to Aluminum Ararticulated)	Steel Welded Skeleton By Default (Can Be Upgraded to Aluminum Ararticulated)
5	Weight (Take 163LB For Example)	35KG	27KG	35KG	35KG
6	Silicone Skin Resilience	Slow	Slow	Quick	Quick
7	Softness Level	★ ★ ★ ★ ★	★ ★ ★	★ ★ ★ ★ ★	★ ★ ★ ★
8	Oil Yield (The more stars,the lower oil yeild)	★ ★ ★ ★ ★	★ ★ ★ ★ ★	★ ★ ★	★ ★ ★



III

X Y c o l o

2 0 2 3 /

03. 11 Types Of Doll Heights

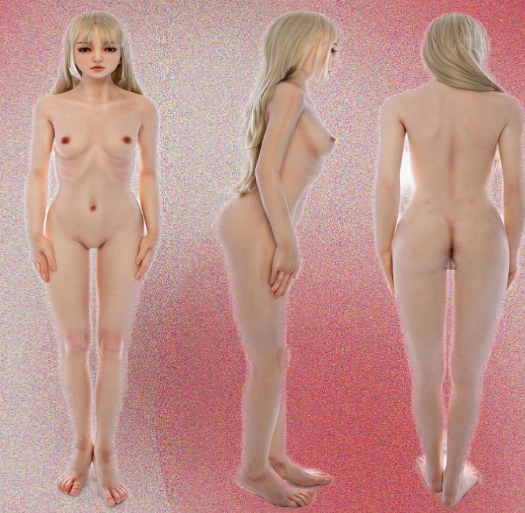
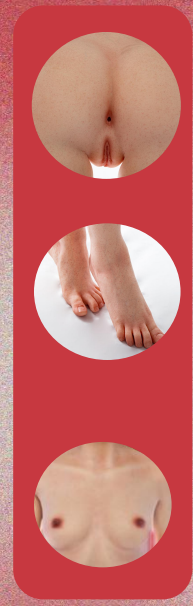
—145cm AIO, 151cm AIO 157cm 158cm 153cmSB/LB
163cmLB/SBcm, 170cm/ 171cm



151cm AIO

Currently, XYcolo 151cm body is a head+body integrated doll called Salamander, she is default to have a heating function. You can choose or not choose this heating function as you like. The genitalia of this body is designed to follow the appearance of a virgin's immaculate genitals.

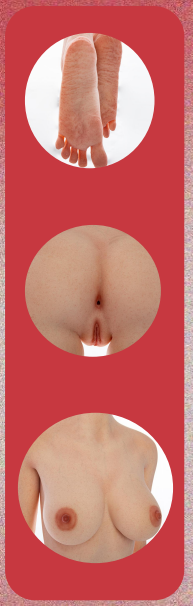
Available for OS/PS/OSP/PSP/PLUS materials.



153cm SB

LB -refers to "large breasts", SB-refers to "small breasts". Those are XYcolo most popular 4 types of bodies.

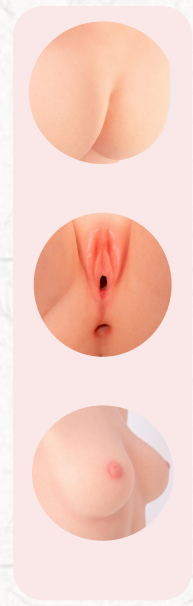
Available for OS/PS/OSP/PSP/PLUS materials.



153cm LB

LB -refers to "large breasts", SB-refers to "small breasts". Those are XYcolo most popular 4 types of bodies.

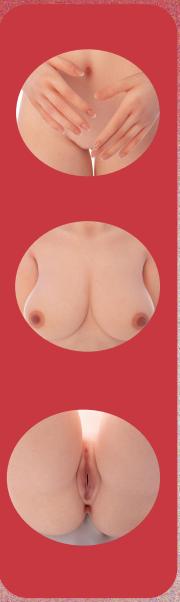
Available for OS/PS/OSP/PSP/PLUS materials.



157cm

157 body is our latest body design, we have optimized the appearance of the genitalia, optimized body mold line. The genitalia looks more realistic, mold line is less visible.

Available for OS/PS/OSP/PSP/PLUS materials.



158cm

This body has bigger breasts and butt, be popular to those clients who like a little bit plump girl.

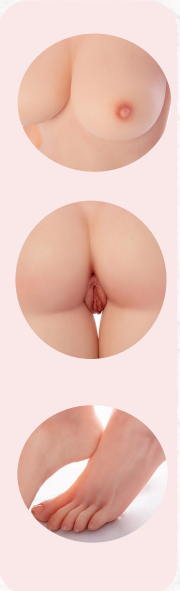
Available for OS/PS/OSP/PSP/PLUS materials.



163cm SB

LB -refers to " large breasts", SB-refers to "small breasts" . Those are XYcolo most popular 4 types of bodies.

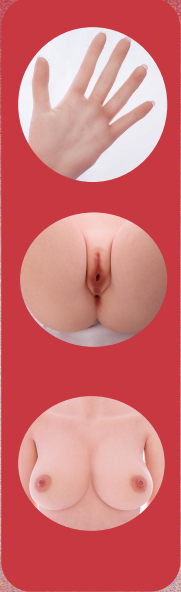
Available for OS/PS/OSP/PSP/PLUS materials.



163cm LB

LB -refers to " large breasts", SB-refers to "small breasts" . Those are XYcolo most popular 4 types of bodies.

Available for OS/PS/OSP/PSP materials.

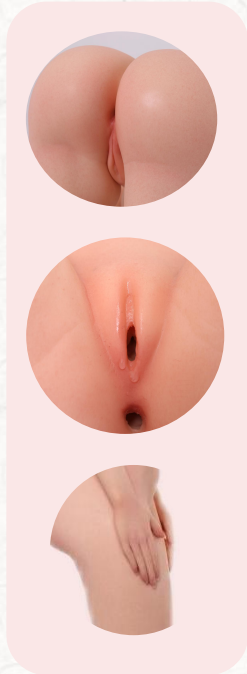


171cm

Suitable for those who like taller girls

Available for OS/PS/OSP/PSP/PLUS materials.

143cm AIO

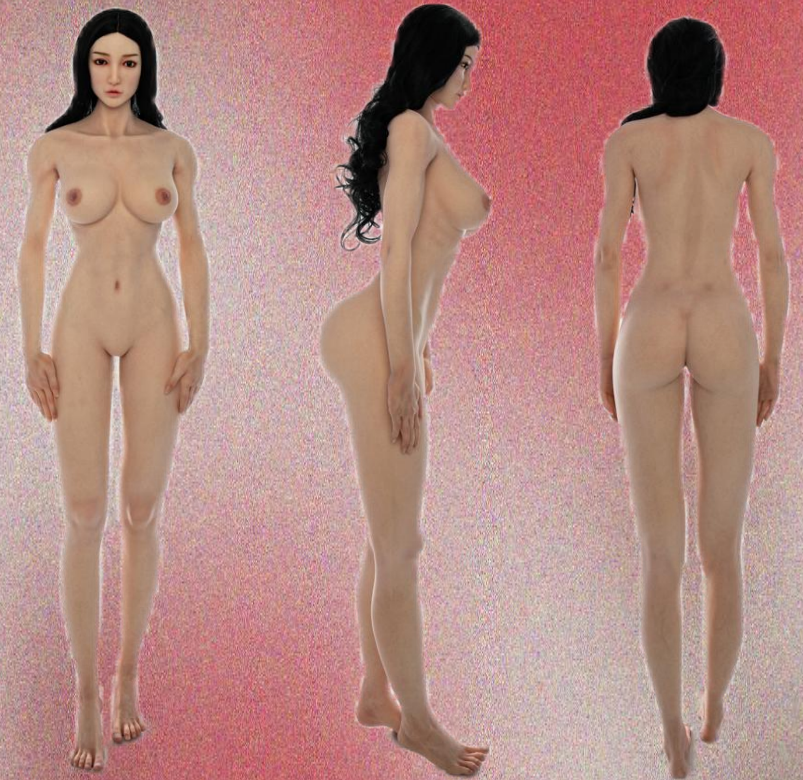
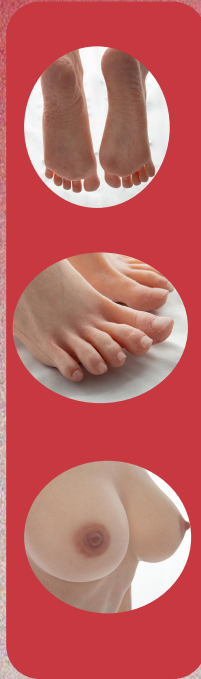


Following on our first 151 AIO doll, XYcolo has our second AIO 145cm doll and XYcolo has added oral and movable jaw features to this 145 Nana.

This doll fulfills the sexual fantasies of many our customers, who are looking for a doll with “younger face but huge breasts” .

Available for OS/PS/OSP/PSP/PLUS materials.

170cm



Available for OS/PS materials Only.

170cm Body is one of our older ones, she has broader shoulders and an athletic build. Compared to 171cm, there is a more pronounced sense of muscle and strength.

169cm AIO



169cm AIO doll--Shelby, with great set of sexy and intimate photos of her face, Olympic-quality breast and curvy body. Her privates look good too.

Available for OSP/PSP/PLUS materials.

Available for OS/PS materials Only.

170cm Body is one of our older ones, she has broader shoulders and an athletic build. Compared to 171cm, there is a more pronounced sense of muscle and strength.

Height And Size Comparison

	145cm AIO	151cm AIO	153cm SB	153cm LB	157cm	158cm	169cm AIO	163cm SB	163cm LB	170cm	171cm
Total Height With Head	145cm	151cm	153cm	153cm	157cm	158cm	169cm	163cm	163cm	170cm	171cm
Body Height Without Head	/	/	137cm	137cm	143cm	148cm	150cm	149cm	149cm	156cm	158cm
Bust	83cm	84cm	73cm	84cm	78cm	85cm	98cm	81cm	88cm	86cm	88cm
Under Bust	58cm	61cm	63cm	63cm	63cm	60cm	66cm	68cm	68cm	66cm	67cm
Waist	52cm	56cm	55cm	55cm	58cm	55cm	61cm	58cm	58cm	55cm	58cm
Hips	90cm	88cm	84cm	84cm	92cm	89cm	99cm	87cm	87cm	91cm	90cm
Shoulder	30cm	34cm	36cm	36cm	36cm	36cm	38cm	37cm	37cm	37cm	39cm
Arms	45cm	41cm	45cm	45cm	47cm	44cm	55cm	49cm	49cm	49cm	49cm
Upper Arm Length	23cm	20cm	24cm	24cm	20cm	23cm	29cm	27cm	27cm	24cm	24cm
Upper Arm Circumference	21cm	20cm	21cm	21cm	22cm	20cm	22cm	22cm	22cm	21cm	22cm
Forearm length	22cm	21cm	20cm	20cm	21cm	21cm	26cm	22cm	22cm	23cm	22cm
Forearm Circumference	21cm	19cm	20cm	20cm	19cm	20cm	20cm	19.5cm	19.5cm	20cm	19cm
Body Length: From Shoulder To Vagina	51cm	56cm	54cm	54cm	55cm	54cm	55cm	59cm	59cm	59cm	61cm
From Hipbone To Ankle	81cm	80cm	80cm	80cm	88cm	87cm	91cm	88cm	88cm	95cm	93cm
From Pussy To Ankle	75cm	69cm	68cm	68cm	75cm	78cm	85cm	76cm	76cm	81cm	85cm
Leg Length	34cm	34cm	32cm	32cm	37cm	39cm	35cm	35cm	35cm	40cm	42cm
Thigh Circumference	49cm	49cm	45cm	45cm	52cm	50cm	60cm	49cm	49cm	53cm	51cm
Calf Length	41cm	35cm	37cm	37cm	40cm	40cm	50cm	42cm	42cm	43cm	41cm
Calf Circumference	32cm	27cm	28cm	28cm	34cm	30cm	33cm	31cm	31cm	32cm	32cm
Feet Length	23cm	21cm	21cm	21cm	21cm	21cm	21cm	22cm	22cm	22cm	22cm
Body Weight (Without Head)											
Organic Silicone Pro (OSPRO)有机PRO	35KG	33kg	29kg	30kg	36KG	32kg	45kg	33kg	34kg	/	35kg
Platinum Silicone Pro (PSPRO)铂金PRO	35KG	33kg	29kg	30kg	36KG	32kg	45kg	33kg	34kg	/	35KG
Organic Silicone (OS)有机	25kg	26kg	23kg	24kg	25kg	27kg	/	26kg	27kg	28kg	28kg
Platinum Silicone (PS)铂金	35kg	33kg	29kg	30kg	31kg	32kg	/	34kg	35kg	36kg	36kg
Note: 1. Head is 2kgs;											
2. Manual measurement, possible error ±2kgs											



III

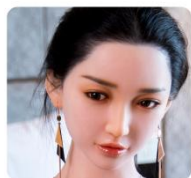
—
X Y c o l o

2
0
2
3
/

04 • 38 Heads Options



37 Heads Options



1 Yana



2 YanaCE



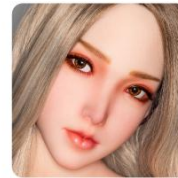
3 Vala



4 Ellie



5 Risa



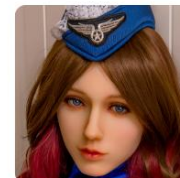
6 charlene



7 Rae



8 RaeNO.2



9 Angel



10 kanno



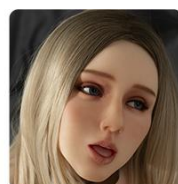
11 Muses



12 Emily



13 Recy



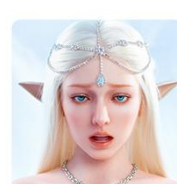
14 Angela



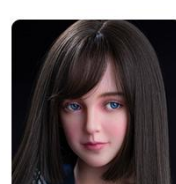
15 Bahia



16 Natalia



17 Brigitte



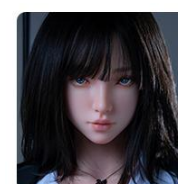
18 Salamander



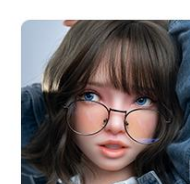
19 Carina



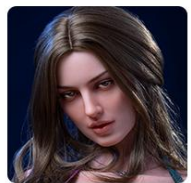
20 Ying



21 Cherry



22 Cherry
(With Movable Jaw)



23 Aevita Anscura



24 Lenore



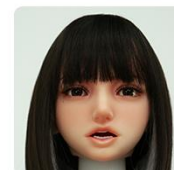
25 Airla



26 Shelby
(169cm AIO)



(1) Ena



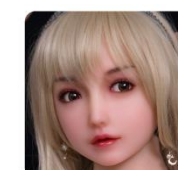
(2) Ena
(With Movable Jaw)



(3) Nao



(4) Aiol



(5) Mumu



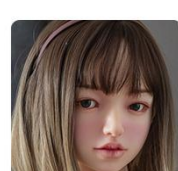
(6) Miyaok



(7) Yumi



(8) Tia



(9) Mina



(10) Nainai



(11) Nora



(12) Nana
(145cm AIO)

From Yana to Shelby are designed for bodies which are higher than 157cm (157 included)

From Ena to Nana are designed to bodies which are lower than 157cm (157 included)



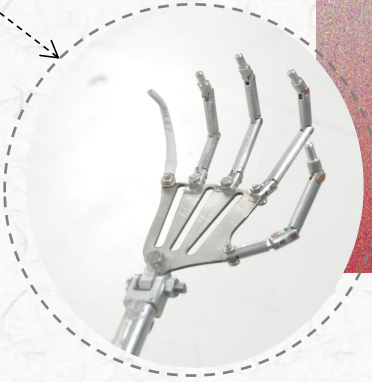
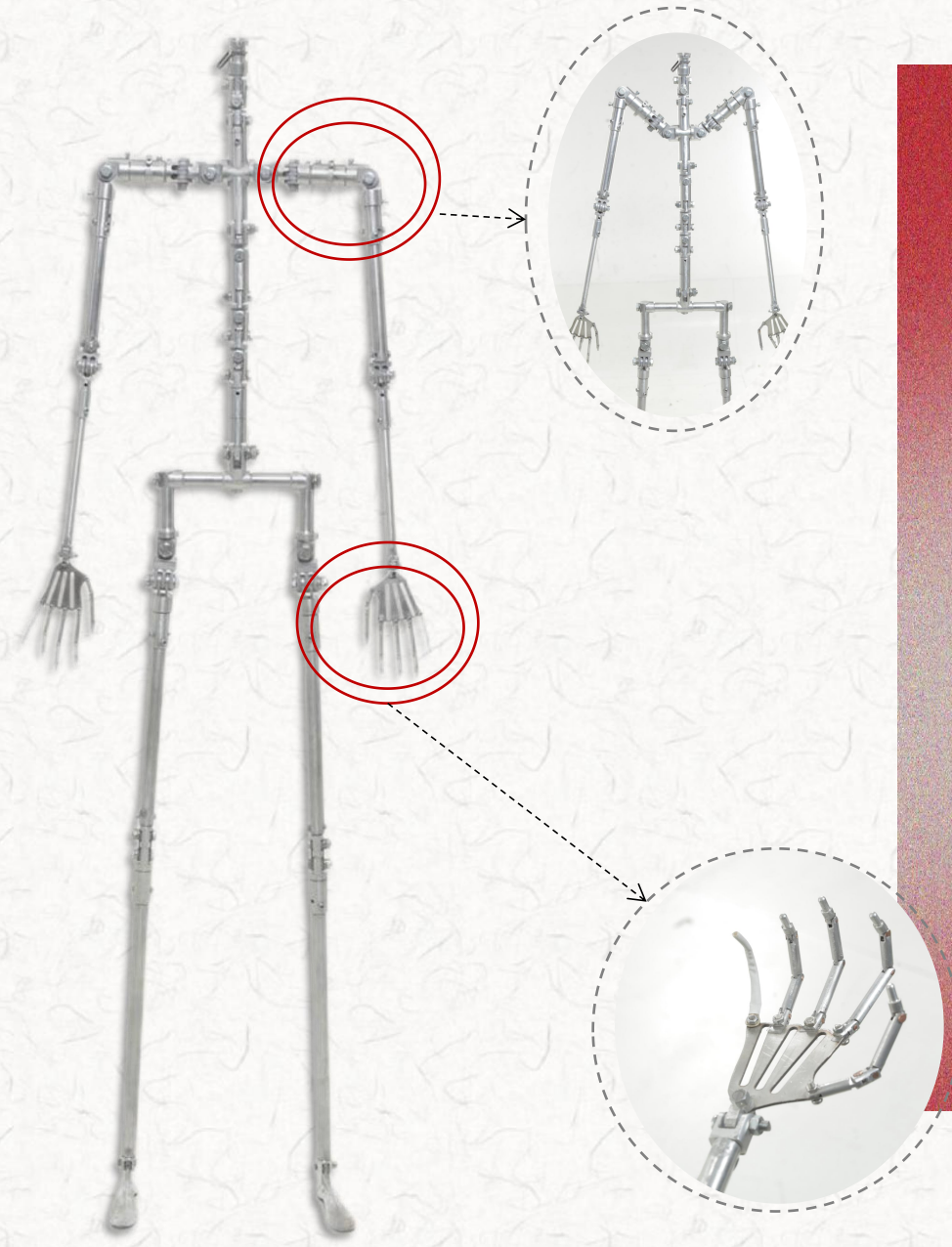
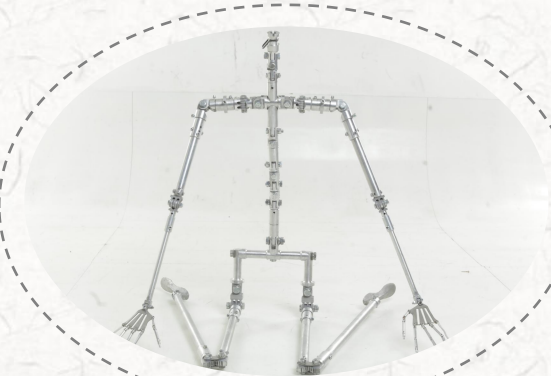
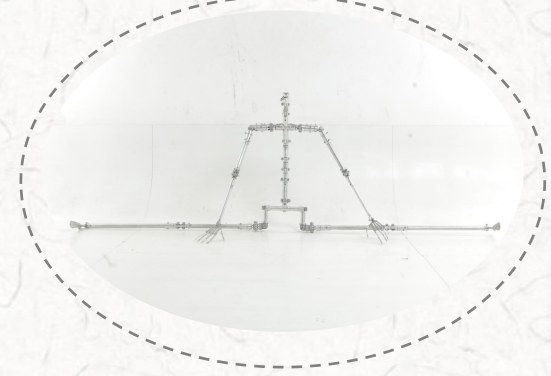
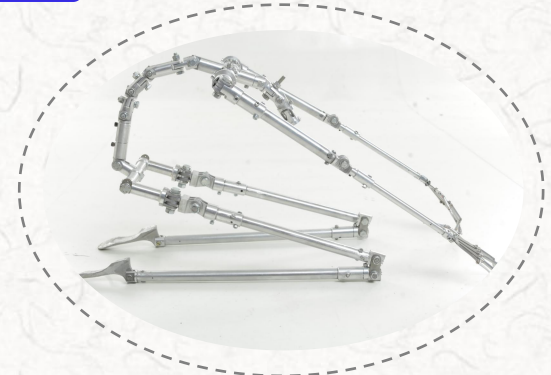
III

—
X Y c o l o

2
0
2
3
/

05.

**Skeleton
Presentation**



Silicone (OS) and Organic Silicone Pro (OSP) bodies.

Aluminum skeleton is the advanced hinged articulated skeleton, which can perform different yoga poses



*OS/OSPRO/OS PRO PLUS are by default with aluminum hinged skeleton, with articulated finger.

*All PS whole & OS head+PS body, by default are with steel skeleton, with wired fingers, can be upgraded to aluminum skeleton with an extra payment.

*153cm & 163cm bodies in /PS PRO/PS PRO PLUS materials are with steel skeleton;

*145cm/151cm/171cm in PS PRO/PS PRO PLUS are upgraded with aluminum hinged skeleton, with articulated finger, price remains the same!

Less Joints, Less Flexible.





III

—
X Y c o l o

2
0
2
3
/

06. Customized Service

- Customized Implanted Hair \ Customized Implanted Eyebrow Eyelash
- Customized Implanted Public Hair \ Customized Make Up/Moles Etc
- Customized Special Color Of Toe or Finger Nails \
- Customized Heating Function For Bodies

Customized Implanted Eyebrow Eyelash

Eyelash and eyebrow implants are almost a MUST to most customers.



Customized Eyelash Implanted



Customized Eyebrow Implanted



Glued Eyelash



Normal Painted Eyebrow

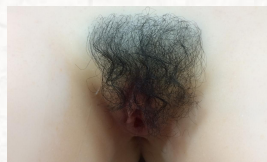
Customized Implanted Hair

XYcolo's hair implants are most prominent because we use only REAL human hair which is bought from a barber shop. While touching the hair, you feel a real sense of living girl. The black and brown color is normal option. for other colors please turn to Ms Monica for more info.



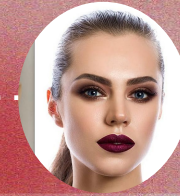
Customized Implanted Public Hair

There are two types of public hair implants, straight and curved.



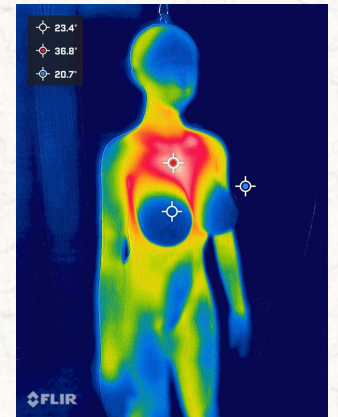
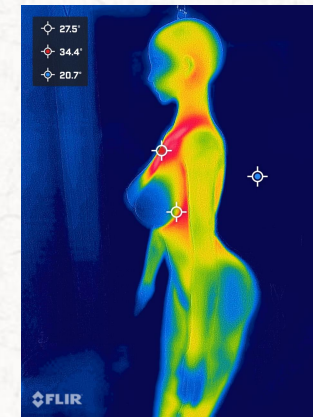
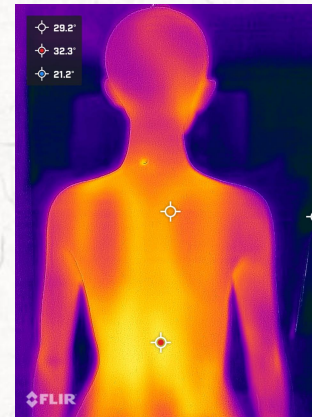
Customized Make Up/Moles Etc

Our artist will customize the make up according to the picture which you send us



Customized Heating Function For Bodies

Heating functions are available only for PRO types.



Customized Special Color Of Toe or Finger Nails

We have 8 colors of toe & finger nails are FREE, for some other options, with additional charge.





Foot Plate

Foot stand to prevent dolls being wore out while standing for long time .



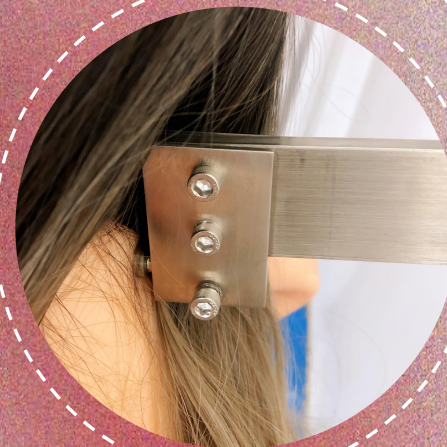
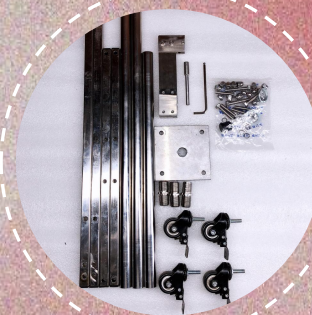
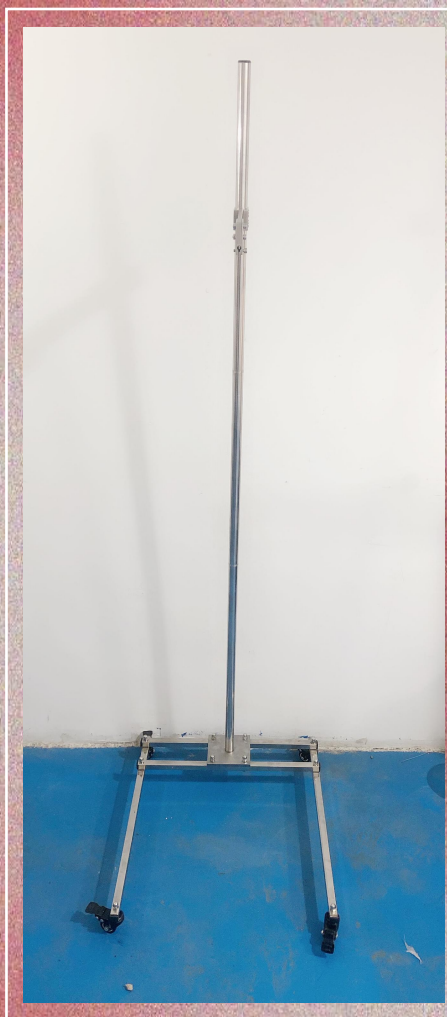
Non-standing



Standing Plate & Bolt

Doll Stand

A special equipment to easy remove your doll, and for store her safely





III

—
X Y c o l o

2
0
2
3
/

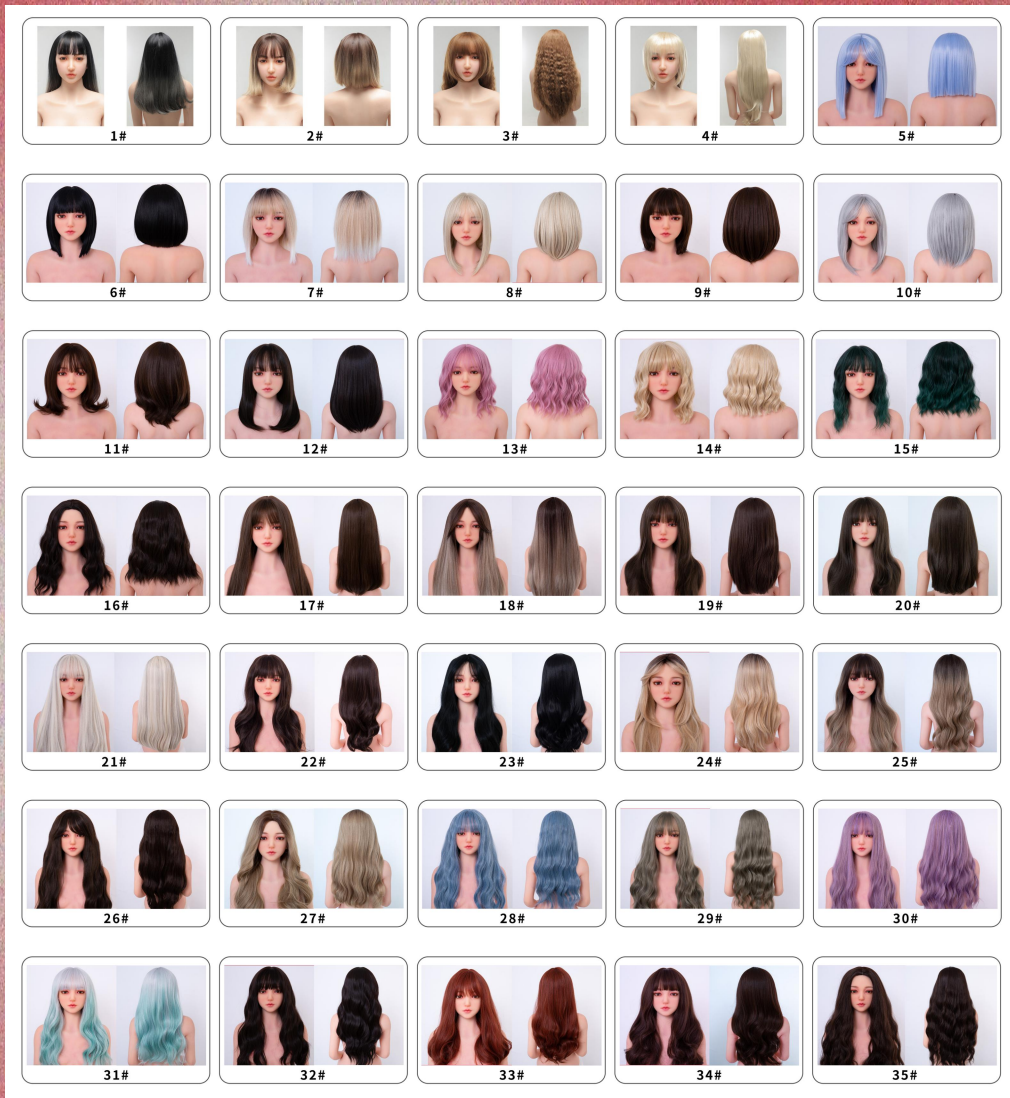
07. *Accessories*



Wigs

XYcolo Provides 39 types of FREE wigs

A
C
C
E
S
S
O
R
I
E
S



Free Nail Colors

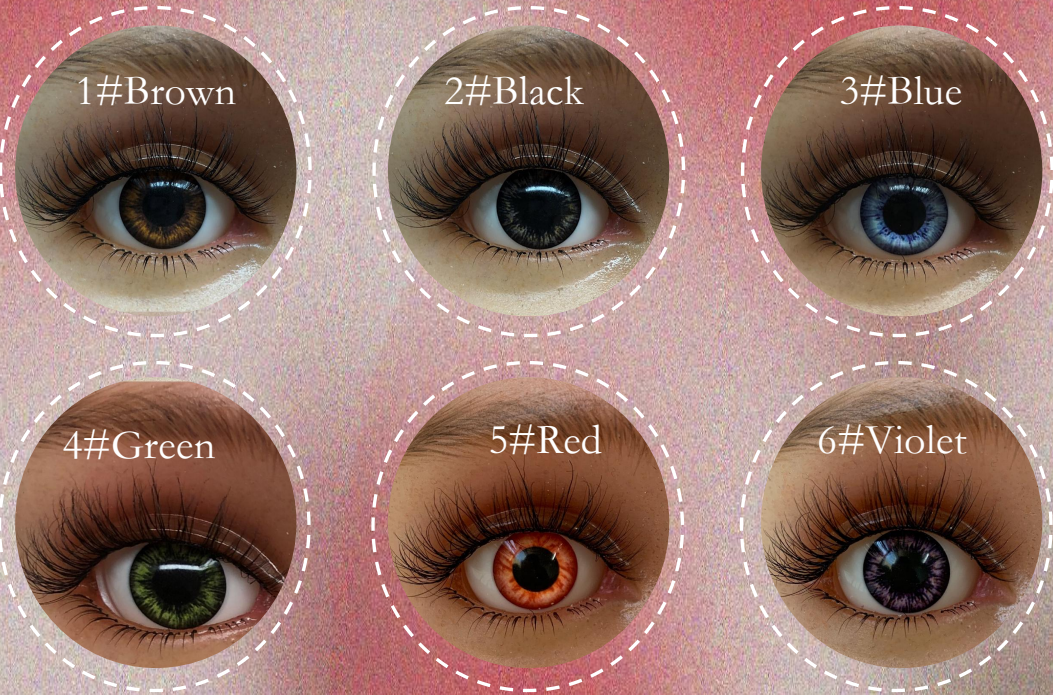
XYcolo provides 8 types of FREE nail colors





Free Eye Colors

XYcolo has 6 Free eye colors.



1#Brown

2#Black

3#Blue

4#Green

5#Red

6#Violet



The shell is put into the head, while moving eyes, the shell itself doesn't move.

between the eye and shell there is a layer of silk wadding, it protects eyes from scratching, while give some movement resistance.

Neck Hook

It is suggested to hang your doll while storing her



Lubricant

Baby Powder

Silicone Repair Agent

Repair Kit

Repair Kits includes glue, baby powder and lubricant, it needs to be sent separately .

Built In One Vagina



Vagina Types

XYcolo provides Two types .

Removable Vagina





Flight Case



All flight case can be customized according to special requirements. Removable box lid with 6~8 latches;
There is 2cm thick shockproof cotton on the bottom and 1cm thickness shockproof cotton on each sides;
It can be customized with a doll hook in one side of the box, so it is more safe for you to save the doll in vertical position.



Electric Vagina Irrigator





III

—
X Y c o l o

2
0
2
3
/

08 • Storage & Maintenance



The OS/PS materials dolls can be stored in a horizontal position, laying in a flight case or ottoman with foam cushioning. However you should check it now and then and put it in a standing or hanging position vertically to get her silicone layers recover.



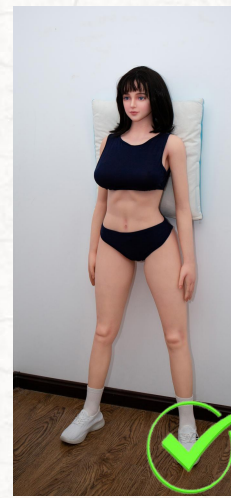
When you are going to sleep with your doll in your arms, or if you want to leave your doll in bed for a few days, lay your doll in the following position:

To lay the doll on its side, you need to bend the arm underneath the doll slightly, with the point of gravity placed at the elbow joint of the doll. This will prevent the doll's hand or finger from being pressed.



The PRO and PRO PLUS materials are made of multi-layer structure, it is very soft, so it might get deformed more easily if letting her sitting on her butt or laying on her back for a period of more than 2 weeks.

So highly recommended to store the PRO/PRO PLUS doll in vertical hanging position, or you can put her in standing position for short while.



When you stand your doll against a wall, always remember to put a cushion on the back and not let the back touch the wall directly. Also, make sure that the bum is not touching the wall and that there is no pressure acting on the bum silicone.

Don't stand in the position for more than a day, and keep the doll from tipping forward.

These storage points do not only apply to PRO or PRO PLUS, all XYcolodolls should be stored in vertical with arms and legs spread naturally if conditions permit.

XYcolo offers a very good doll stand, please refer to the previous page on doll stand, which is equipped with high-quality wheels, keeping your dolls in good vertical condition and making them easy to be move around.

Storage is an essential part of your sex doll experience. It is the recovery stage before you need to use the doll again. Unfortunately, most people damage their love dolls with poor storage practice. So, here are a few **storage DONT'S** to help you take better care of your new partner:



small spaces



*Don't store the doll in a cramped-up position or small spaces; hang it in the closet or use a customized sex doll storage case. Putting the doll under stress for an extended time can cause irreparable damage to the skin, skeleton, or joints.



big spaces



*Don't store the doll in humid or too dry areas. Bad temperature condition will produce oil too quickly, dry and crack and age too early.



*Don't store your sex doll with jewelry, shoes, or other accessories. Only store a clean and well-dried sex doll. This helps maintain a good look in the long run while ensuring the dolls are always ready when you are.



* Don't use colored material to cover the sex doll during storage. Instead, use colorfast towels, soft blankets, and throw pillows.



* Don't store the sex doll in a case or ottoman without foam cushioning. Doing so can result in dents and other damages to the material.



*Do not leave your sex doll in storage for long without regular checks. Always take a look and, if necessary, clean the sex doll every once in a while to wipe off any dirt.

Silicone is very stain-resistant. Silicone doesn't need lots of powdering like TPE. So you can wash it with water or water fixed with a little mild soap then rinse with water. Powder it every now and then.



2023 /

XYCOLO



Thank you

XYcolo only produces silicone dolls. luxury adult toy

Contact: Monica

Email: xycolo2@126.com

skype: chinabeans88

Twitter: @XYCOLO2 @XycoloMonica : (<https://twitter.com/XycoloMonica>)

TikTok -XYCOLOMONICA(@xycolomonica) | TikTok

Youtube: @xycolomonica <https://www.youtube.com/@xycolomonica/videos>